

# TROUT LAKE COMMUNITY FOUNDATION 2009

## In this issue:

- THE GIFT OF TIME PG 1
- INVEST IN THE FUTURE PG 1
- RUMMAGE SALE 101 PG 2
- PAST RECIPIENT UPDATES PG 3
- 2009 SCHOLARSHIP RECIPIENTS PG 4
- 2009 FINANCIAL REPORT PG 4



Volunteers—The Fuel of the Foundation's engine

## The Gift of Time



Throughout the Foundation's history it has benefited substantially from literally thousands of hours of volunteer help from community members. From setting up tents for the rummage sale to donating and collecting pennies for the penny drive, volunteers are the "fuel" of the Foundation's engine. It is clear that the Foundation's success is a direct result of the time and energy the community has given to our fundraising events and thousands of volunteer hours that these efforts represent.

In just the past year community members, with the assistance of local businesses, raised \$1,293 with the annual penny drive and, as is our tradition, that entire amount was awarded as one scholarship. Next, we focused our efforts on the Silent Auction at the Trout Lake Fair. Generous donations and spirited bidding helped this event raise over \$2,500 for the Foundation's coffers. Finally, a small army of volunteers came together to pull off the miracle that is the annual rummage sale over Labor Day Weekend. To make this happen our volunteers worked over several months to collect, organize and price a mountain of donations that have made this annual sale an integral part of the community fabric. Despite challenging weather, this year's sale raised \$ 14,249 for scholarships. When this is all added up it is easy to see how the community's contributions of time and money are the keys to the Foundation's success.

The way we see it, the time our volunteers give to the Foundation's fundraising efforts not only translates into money for scholarships but also time for our students. When we help our students with the cost of their education, it allows them to spend more time on their studies and less time and worry on the costs of this education. It has been said that the majority of education is encouragement. This is evident to Board Members when we read the thank you notes from scholarship recipients and follow their progress through college and beyond. We are convinced that the encouragement a scholarship provides demonstrates to our students that we believe in them and what they can and will accomplish. Thank you all for giving of your time, money and encouragement to the Foundation – it is making a difference.

## Invest in the future by sponsoring a scholarship!

Have you considered joining the ranks of local organizations, companies, and community individuals who sponsor scholarships through The Trout Lake Community Foundation? This is your chance to champion a student's dream while rewarding community service, memorializing a loved one, promoting a field of study, or as an anonymous gesture. If you have an interest in helping our youth, with a scholarship in any amount, please contact a Foundation Board Member for additional information.



“Shoes and boots...  
...come in pairs!”



Now that's a treasure!!

“We can't thank you enough for the generous scholarship you have given our daughter, Adi. We deeply appreciate the steadfast support the community has shown her and other students.” Dean & Linda Robertson, parents of Adi

## Rummage Sale 101

As much as the Trout Lake Community Foundation volunteers enjoy putting in all those hours sorting and pricing items for our annual Giant Rummage Sale, you can save us huge amounts of time and effort by taking a few minutes to *sort, Sort, SORT* through your items! Here are a few things for you to consider before dropping off your bags and boxes at Coralee's office:

- Are your clothing and linens clean and free of holes and stains? We hope so! Although we try to recycle unusable cloth items into shop rags, you will help us greatly by donating quality items.
- Shoes & boots, slippers & socks, gloves & mittens...all come in pairs! Yes? YES!!
- Open up and look through those boxes stored in the garage or back shed. Items covered with a little old fashioned dirt are fine, but please wash off the mouse “doo” so we don't have to.
- What is worse than putting together a puzzle or setting up a board game, only to discover missing pieces? Arggggh! So please donate complete games and puzzles...and better yet, secure them with rubber bands or tape.
- Electronics. Gadgets. Appliances. In a nut shell, if it doesn't work for you, then it won't work for us, either! Are all of the parts there? How about the electric cord? What's working and what's junk? You know best. We don't want to disappoint our rummaging customers with non-functioning purchases, so inspect your electronic donations and make sure they are in working order. And please, do not drop off televisions or computer monitors.
- Trash or treasure? Yes, beauty is in the eye of the beholder, but any way you look at it... garbage is garbage is garbage! When Coralee opens her door for drop offs next spring, help us save time and effort (not to mention the expense of hauling unsellable items off to the dump!) by sorting your donations for quality and cleanliness. Our workers will thank you, during every volunteered minute of every volunteered hour!

Page Logan

## Rummage Sale Action



## Board Members Thank Community Volunteers

In March, the TLCF treated the community to a baked potato dinner as a thank-you for all the help we have received. We had a large turnout, and a good time was had by all.



Kids Crew Helping Out



## Scholarship Recipient Update—Courtney Smith



My name is Courtney Smith. I moved to Trout Lake on my second birthday and lived there until I graduated in 2005. At that time, with the help of several scholarships and grants, including a generous one from the Trout Lake Community Foundation, I headed off to college to pursue my childhood dream of becoming a nurse.

I attended Linfield College where I spent my first two years on the main campus in McMinnville, Oregon completing my nursing prerequisites. I then transferred to the Linfield-Good Samaritan School of Nursing in northwest Portland. I didn't travel too far from Trout Lake for my education, but it opened my eyes to a new world through my classes and experiences. In my nursing rotations I worked with diverse populations including prison inmates, homeless, and people with psychiatric illnesses all from a variety of backgrounds and cultures. I also had an opportunity in January of 2009 to travel to Russia for three weeks and study the health care system there.

In May of 2009, I graduated with my Bachelor of Science in Nursing and in June I took the national licensure exam and obtained my Registered Nursing License in Washington State. I now live in Washougal and work at Southwest Washington Medical Center in Vancouver. I have a full time night shift position on a Medical Respiratory/Telemetry unit, which also takes some Medical Psychiatric patients. It's

a great place to start my career because the variety of patients provide ample learning experiences.

I would like to thank the Trout Lake community and my family for their continued support. I wouldn't be who I am or have made it where I have without you all.

**"THANKS SO MUCH FOR THE SCHOLARSHIPS!**

It was such a pleasant surprise - and an honor - to hear my name called at graduation. It's a HUGE relief to know that some of the business end of college is taken care of."

Holly Phares

## Scholarship Recipient Update—Adam Paxson



My name is Adam Paxson, and I am extremely fortunate to have been raised in Trout Lake. I attended Trout Lake School for my entire K-12 career, starting with kindergarten in the building which is now Jonah Ministries and graduating in the current building with my class of 18 in 2005. I have wanted to be an engineer since the day I first stuck two Lego bricks together, and the solid, focused education I received at TLS, along with a grant from the Trout Lake Community foundation, make it possible for to me to pursue this goal.

I attended the Massachusetts Institute of Technology in Cambridge starting in September of 2005. The experience was exhilarating; it was a stark change to be thrown from a rural town of a couple thousand to a bustling city of 600,000 on the opposite side of the continent. No more whimsical views of Mt. Adams and dairy cows, to say the least. From my undergraduate residence in Kenmore Square, I could feel every single home run hit by the Boston Red Sox. I entered the department of mechanical engineering during my second semester, and after three more years of designing robots and Stirling heat engines, managed to graduate with a 5.0 GPA and a Bachelor of Science in Mechanical Engineering, with a minor in Music.

During the summers between my undergrad years at MIT, I held internships at two engineering firms in the Gorge. At Insitu, I was responsible for a range of duties from assembling propulsion modules to scheduling flights and field-testing UAVs. After three years at Insitu, I spent a summer next door at Innovative Composites Engineering designing and building manufacturing systems for carbon composites.

To complement my focus on energy studies at MIT, last summer I found a position at Lloyd Energy Systems, a solar thermal company in Sydney, Australia. I designed the steam flow control model and built some of the steam loop for a concentrating solar thermal plant. The company is in full-scale installation in Australia and aims to start installing renewable solar thermal power plants in other countries.

Currently, I am studying under the Energy Initiative Fellowship at MIT in the mechanical engineering MS program and am working towards a Ph. D. I am doing research with Prof. Kripa Varanasi on condensation heat transfer from nanotextured surfaces in the hopes of making a huge impact on the efficiency of current and future power plants worldwide. The project also has direct applications to desalination and any other processes which use phase-change heat exchangers. During my junior year at MIT, I accepted an internship position at Schlumberger with one of the instructors of a robotics class. Now I am also a part-time research engineer at the Schlumberger-Doll Research Center in Cambridge. Trout Lake has definitely shaped me in a positive way, and I am very thankful to be a part of such a unique, close-knit community. I'd like to thank the Trout Lake Community Foundation for their support.

"At graduation, my brother invited 14 of his college friends to stay with us. Having attended larger, city schools, they were amazed at the amount of community support at the TL school. They are right, because it really is amazing what this little town can do."

Emily Paxson

"It was such a blessing to receive the Community Club Scholarship, the Foundation Scholarship, and the Erwin Sweighoffer Scholarship. Many thanks! You guys do so much for the students at the Trout Lake School."

Anna Schmid

## 2009 Scholarship Recipients

Tyler Cope  
\$500 Sweighoffer, \$500 Tofurky  
\$500 Engineering



Mikael Dick  
\$3,500 TL Farm



Emily Paxson  
\$3,500 TL Farm



Luke Dearden  
\$2,000 TLFCF



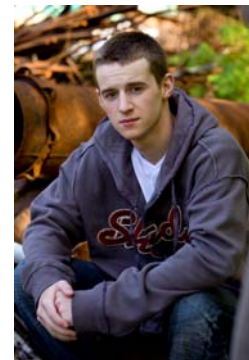
Holly Phares  
\$3,000 TL Farm  
\$500 McKinney



Anna Schmid  
\$500 Community Club,  
\$1,000 Sweighoffer, \$500 TLFCF



Bergen Vocke  
\$1,293 Penny Drive



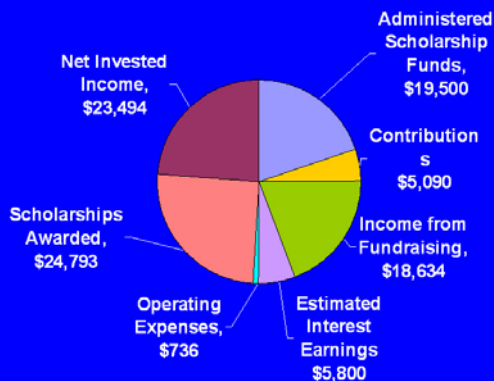
Alex Whitefield  
\$1,000 Tofurky

### Post-Graduate Scholarship Recipients

Stephanie Anderson—\$500 TLFCF  
Anna Avila—\$1,500 Hylton, \$500 Bi-Cultural  
Dannon Kavanagh—\$500 TLFCF  
David Kavanagh—\$1,000 TLFCF

Michael Parker-Lee—\$500 Mt. Adams Riders  
Adi Robertson—\$1,000 Tofurky  
Andrea VanLaar—\$500 TLFCF  
Angeline Wasgatt—\$500 Nursing/Medical

### 2009 Income and Expense



### TLCF Board of Directors

Jeff Baker  
Martha Hylton  
Janie Kavanagh  
Marc Shuman  
Jim White  
Kathy White  
Coralee Warner  
Page Logan  
Pete Welch  
Betina McCuiston  
(Emeritus)

Trout Lake  
Community  
Foundation

P.O. Box 322  
Trout Lake, WA  
98650

E-mail us at  
[troutlakefoundation@gorge.net](mailto:troutlakefoundation@gorge.net)