

2008

In this issue:

It All Adds Up	Pg 1
Invest in the Future	Pg 2
Ninety Two and Still Serving	Pg 3
2008 Scholarship Recipients	Pg 4

TROUT LAKE COMMUNITY FOUNDATION



IT ALL ADDS UP



In less than ten years, the Trout Lake Community Foundation has raised over \$180,000 for scholarships for local students. While that amount is impressive in its own right, what is more impressive is how this has been accomplished. With the exception of the few significant gifts we have received, such as from the Sweighoefer Estate, the bulk of this money has been raised bit-by-bit and, in some cases, one penny at a time. Nevertheless, with the commitment and hard work of our many

supporters, these small efforts have really added up. This year's fund raising efforts are no exception.

We kicked off our fund raising efforts last spring with a new twist. Our annual penny drive was transformed this year into "Penny Wars." In addition to collecting spare change at area businesses, this year Trout Lake School students competed by class to see who could raise the most money. The twist was that the classes lost points in the race if their collection jars were filled with currency other than pennies (so they "lost" money by collecting more money!). In the end, the elementary classes prevailed, and \$1,800 was raised for the Penny Scholarship. As we have done in the past few years, the entire amount raised in the Penny Drive was awarded as one scholarship. This year we were please to present that scholarship to Kindra Van Laar.

Next, the Foundation turned its focus to the Silent Auction at the Trout Lake Fair. This auction has become a fixture at the Fair by not only raising money for a good cause, but by also providing a fun diversion for fairgoers. This year, the Auction raised \$2,224 for Foundation coffers. As always, the success of this event is due to the generosity of local businesses and individuals that donate fantastic auction items, as well as the expert organization of long-time Foundation board member, Kathy White and rookie organizer Jim White.

Finally, we were able to pull off one more gigantic Labor Day Rummage Sale with the assistance of the legions of people that make such a monumental event possible. When you think of all of the work and man power it takes to put on our amazing rummage sale, we are always being asked—Is it worth it? Well, it doesn't take long to start adding up all of the benefits from our sale. The most obvious benefit is the large sum of money we make each year, but there are so many other intangible benefits, such as community spirit. It is amazing to see so many volunteers working side by side, helping those in need. Because we keep our prices so low, many people are able to help themselves as they are helping to raise money for our students. The sale provides an opportunity for kids of all ages to be involved in a community service project. So, is all that work worth it? Well, when you compare the amount of time we put in, to achieve the many benefits, we think the answer is a resounding "YES!"



CORALEE WARNER PROVIDES WORLD CLASS GUIDANCE TO CUSTOMERS



"I am writing as a grateful recipient of one of the T L C F scholarships, thank you for choosing me—it will help me a great deal in the 08-09 school year."
 Michael Parker-Lee

WANTED

NEW Rummage Sale Location

Weather-tight Storage Space

Donation and Sorting Site



MIKE HOLMAN AND DORIS MASSEY HELP CHECK OUT WITH A SMILE

Invest in the future by sponsoring a scholarship!

"We appreciate and thank you for your interest and support of Washington State University students."

WSU Scholarships/Student Accounts

Have you considered joining the ranks of local organizations, companies, and community individuals who sponsor scholarships through The Trout Lake Community Foundation?

This is your chance to champion a student's dream while rewarding community service, memorializing a loved one, promoting a field of study, or as an anonymous gesture.

If you have an interest in helping our youth, with a scholarship in any amount, please contact a Foundation Board Member for additional information.

Ninety-two and still serving

Bettina McCuiston became one of the charter board members when the Trout Lake Community Foundation formed in 1999. After actively serving for six years, she retired from her position. Today she continues to serve as an honorary board member, a role which allows her to stay involved in the Foundation's work. Sharp as a tack, she proofs our documents - and we correct them. She reviews our decisions - and we consider her insights. She makes suggestions - and you had better believe it, we listen!

Each summer, Bettina graciously hosts our biggest annual fundraiser, the Labor Day Weekend Rummage Sale, on her "downtown Trout Lake" front lawn. Happy as a clam in her shaded lawn chair, Bettina watches the noise and hectic pace as scores of shoppers tote off hundreds of items. She joins the volunteer workers for lunch each day, enjoying the lively chatter and greeting the locals.

One loong weekend later, the cash register slams shut for the last time. Then it's down with the tents and tables, and off with the recycle goods and garbage. The Foundation gains many thousands of dollars, and Bettina is left with a very dusty, trampled front lawn. Through it all, Bettina doesn't mind. She is quite pleased to be a part of the Foundation's "doin's".

Ninety-two and still helping others..... now that's what you call community service!



The Trout Lake Community Foundation truly thanks Bettina for her many years of service and dedication to our mission.



Scholarship Recipient Update

Greetings from Britt Tilton to her fellow Trout Lakers!

Britt graduated from Western Washington University in June 2007 with a BA degree in Arts, Production and Promotion. She had also attended other universities along the way including Chapman in Los Angeles, College of Charleston in South Carolina, and Arcadia University in Athens, Greece as an exchange student.

Britt moved to Los Angeles in September 2007. She worked at several jobs in the LA area over the past year including a temp agency and marketing firm. She is very excited to have recently been hired by Andell Inc., a privately owned venture capital firm in Westwood. This company has offered her a great career opportunity with an entry-level position. Andell manages a wide variety of business and investment holdings world-wide. They are also heavily involved in the media and entertainment industry, which is a particular interest of hers. She was told there were 3,000 applicants for the job. But of course in being a successful and knowledgeable company, they selected a Trout Lake School graduate!

Britt is also very interested in acting, and is currently taking private lessons. She has been an "extra" on such television productions as *Prison Break* and *Saving Grace*. She intends to continue developing her acting abilities.

Along with her update, Britt sends the following message: "I would like to sincerely thank the Trout Lake Community Foundation for the scholarship I received after my high school graduation in 2003. The funds contributed a great deal toward financing my education, helping me on the path to realizing my dreams."

"I would like to thank every member of the TLCF—During the most crucial time of a young college students life, it is refreshing to know there is an entire community behind the student's future."

David Kavanagh



Alura Gilliland
\$3,000 - Trout Lake Farm



Kristian Rubesh
\$1,000 TLCF



Angeline Wasgatt
\$2,000 Trout Lake Farm
\$500 Memorial / Medical



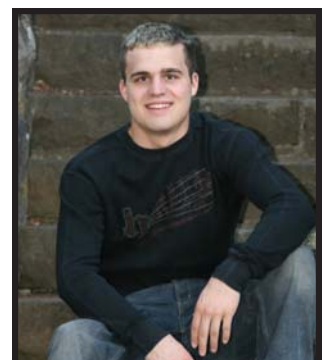
Kris Wood
\$2,000 Trout Lake Farm



Kindra VanLaar
\$500 Community Club
\$500 Mt. Adams Riders
\$1,848 Penny Drive



Stephanie Anderson
\$1,500 TLCF
\$500 Community Club



Dannon Kavanagh
\$3,000 Trout Lake Farm

Post-Graduate Scholarship Recipients

Justin Holtman—\$1,500 Memorial / Hylton
David Kavanagh—\$1,000 Sweighofer
Tony Leslie—\$500 TLCF, \$500 Memorial / Engineering

Michael Parker-Lee—\$500 Sweighofer
Kim Poland—\$1,500 TLCF
Andrea VanLaar—\$1,000 TLCF

Trout Lake
Community
Foundation

P.O. Box 322
Trout Lake, WA 98650
TIN# 91-2010756

TLCF Board of Directors

Jeff Baker
Martha Hylton
Janie Kavanagh
Mike Wells
Jim White
Kathy White

Coralee Warner
Page Logan
Pete Welch
Bettina McCuiston
(Emeritus)

E-mail us at
troutlakefoundation@gorge.net